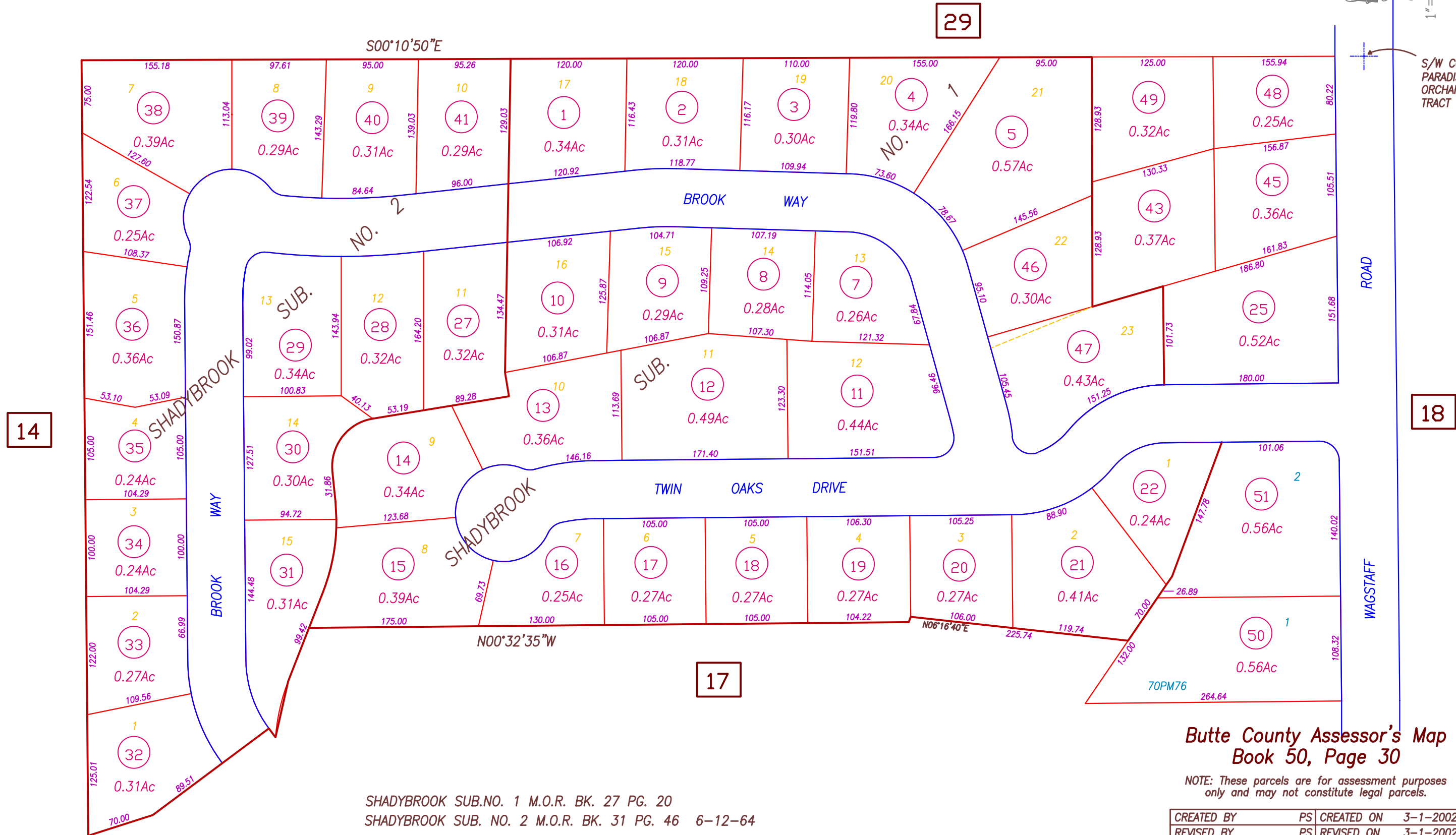
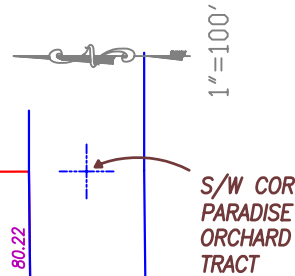


PTN OF N 1/2, SEC. 12, T.22N, R3E

50-30



SHADYBROOK SUB.NO. 1 M.O.R. BK. 27 PG. 20
 SHADYBROOK SUB. NO. 2 M.O.R. BK. 31 PG. 46 6-12-64

Butte County Assessor's Map
 Book 50, Page 30

NOTE: These parcels are for assessment purposes only and may not constitute legal parcels.

CREATED BY	PS	CREATED ON	3-1-2002
REVISED BY	PS	REVISED ON	3-1-2002
		EFFECTIVE	2002-03 ROLL
Previous Book , Portion Of Page			
Compiled By The Butte County Assessor's Office			